

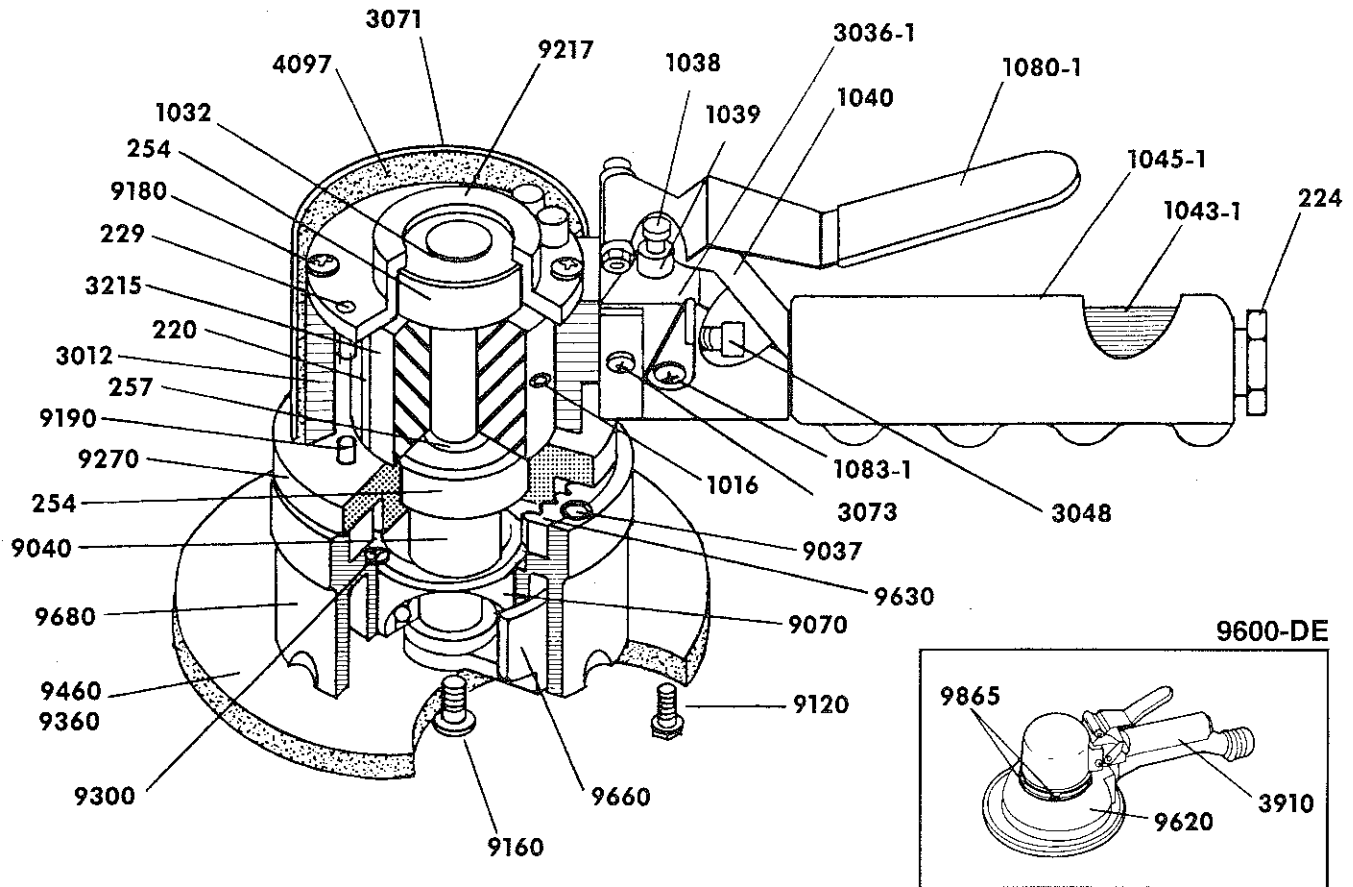


National Detroit, Inc.

P.O. Box 2285 ■ Rockford, IL 61131
 (815) 877-4041 ■ Fax (815) 877-4050
 email: NationalDetroit@compuserve.com
 website: <http://www.NationalDetroit.com>

MODEL 9600
9600-DE

Shipping Address:
 1590 Northrock Court
 Rockford, IL 61103



Part No. Description

220	Rotor Blade (5)
224	Motor Screen Plug
229	Dowel Pin—Upper Motor (2)
246-1	Valve Spring
250	Valve Pipe Plug
254	Ball Bearing, Motor (2)
257	Shim (sizes available .001 thru .006, .010 and .015)
1016	Rotor Set Screw
1032	Gasket, Metal, Upper Motor Bearing
1037	Valve Ball
1038	Valve Stem
1039	Valve Stem Sleeve
1040	Valve Lever
1042	Valve Lever Jam Nut
1043-1	Handle Steel
1045-1	Finger Grip Handle
1080-1	Valve Lever Booster Assembly
1080-B	Valve Lever Bracket Nut
1080-C	Valve Lever Bracket Screw
1083-1	Speed Control Regulator Assembly
3012	Motor Cylinder
3036-1	Valve Assembly complete with 1083-1
3048	Valve Screw Socket Cap 1" long (2)
3071	Motor Cover
3073	Cover Screw with Washers (2)
3215	Motor Rotor
4097	Muffler Material
9037	Gear Screw (4)
9040	Crankshaft

Part No. Description

9070	Crank Bearing
9120	Pad Attaching Screw (6)
9160	Counterweight Attaching Screw
9180	Motor Screw including Lockwasher (4)
9190	Lower Motor Dowel Pin (2)
9217	Upper Motor Bearing Plate Assembly (includes Bearing)
9270	Lower Motor Bearing Plate Assembly (includes Bearing and Gear)
9300	Screw, Bearing Retaining (3)
9630	Driven Gear
9660	Counterweight Assembly (includes Attaching Screw)
9680	Transmission Assembly (includes Bearing, Gear and Screws)

• Be sure to use the special screws (9120) furnished with the pads. Other screws may damage 9680 Transmission

Pads

9460	Vinyl Face Pad, 6" dia.—Use PSA Abrasive with standard hole pattern for dust extraction
9360	Cotton Face Pad, 6" dia.—Use Cement
9677-5	5" Hook Face Pad
9677-6	6" Hook Face Pad

Dust Extraction Parts For DE Model

Delete 1045-1	Grip
3910	Air Tube Handle
9620	Dust Shroud
9865	Screw (4)
9650	Dust Extraction Kit, includes all of the above plus 9460 Pad and 9120 Pad Screws (6)

NATIONAL-DETROIT
MODEL 9600 SANDER
OPERATING INSTRUCTIONS

AIR PRESSURE. 80 PSI maximum at sander. Excessive air pressure causes wear and actually retards sanding efficiency. Never run Sander "Free or Wild" on high air pressure. Adjustable lever on left side of Sander's valve controls flow of air if the tool is used on higher air line pressure.

LUBRICATION—IMPORTANT. Daily put 8 to 10 drops of very light oil in the air intake. This will eliminate rust formation in the Motor Cylinder. AIR line lubricator is not required. If one is used, set for one

drop each 10 minutes. **DO NOT USE HEAVIER THAN Finol or 3-In-One.** Ball Bearings are sealed for the life of the bearings.

MOISTURE AND FILTER TRAP. Clean dry air is important to prevent rust and excessive wear. Use only Regulated Air Line with a good Line Filter on each outlet; open Pet Cock every morning to drain accumulated water. Keep Intake Filter **CLEAN** or plastic and paint dust is sucked into air lines. Drain water and sludge from Compressor Storage Tank every day.

**CAUTION: READ AND OBSERVE THE ENCLOSED WARNINGS
AND SAFETY RULES FOR SAFE OPERATION.**